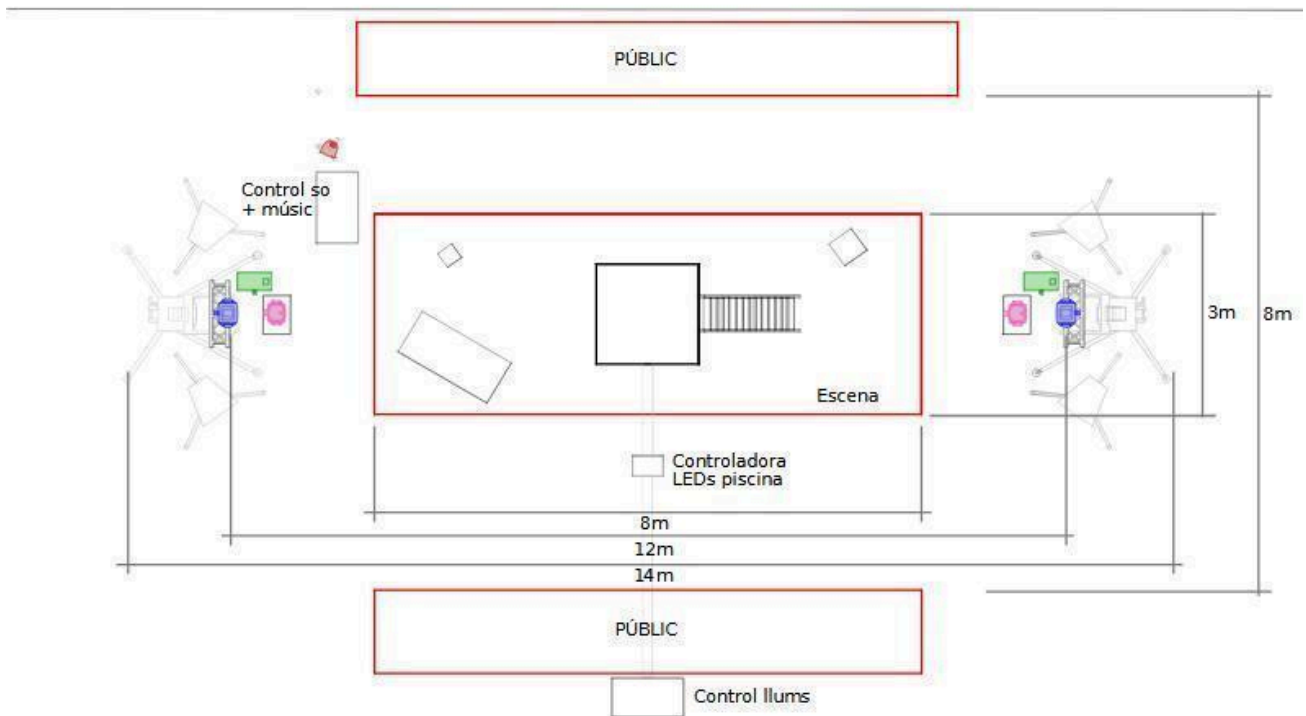
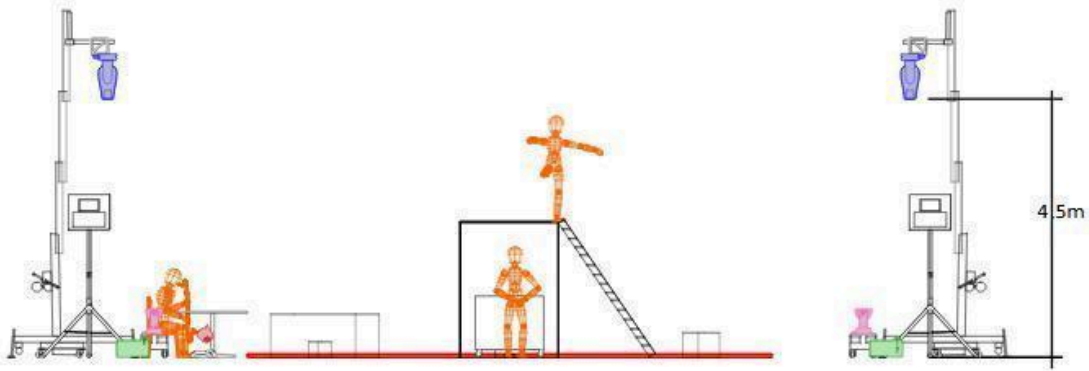


The submerged voice

Maria Palma company

Duration: 45 minutes aprox.

Audience: From 8 years old



TECHNICAL

LIGHTS

- **2 SPOT** CMY or RGB with automatic blades
- (Reference models: INFINITY FURION S601, ELATION FUZE PROFILE)
- **2 WASH** ALEDA K10 B-EYE or similar range
- 2 RGBW LED PAR lights
- 2 TOUR HAZER II (1 for indoor use)
- In case of outdoor setup (see plan):
 - 2 Genie towers with fork
 - 2 truss sections of 1m
 - Cables from the light control to the stage
 - Table/flightcase and chair for the light control located in front of the aquarium, among the audience
 - Tent or umbrella for testing

*PROVIDED BY THE COMPANY:
Own table with 2 universes (Chamsys)
Own LED light system integrated into the aquarium*

AUDIO

- 4 speakers (stereo duplicates) with full range or subwoofer
- 1 sound table
- 2 DI boxes (if necessary)
- 2 audio cables from the DI to the organization's sound table (length according to space)
- 1 XLR female > XLR male cable of 2 meters
- 1 XLR female > XLR male cable of 5 meters
- 2 microphone stands
- 1 black table or table with black cloth
- 1 chair or stool for drums
- 1 power strip with 4 outlets

*PROVIDED BY THE COMPANY:
1 MacBook Pro 15-inch 2018 2.6 GHz Intel Core i7 32 GB RAM
1 AKAI LPD8 MIDI Controller
1 Universal Audio Apollo x4
1 Ambient ASF-2 MKII Hydrophone
1 Sennheiser e840
1 RODE NTG-4+
1 Lectrosonics DBSMD/E01-A1B1
1 Lectrosonics WM
1 Countryman B3
Stereo Output: 1/4" TRS Balanced (100 Ω)*

SPACE

DIMENSIONS

- Required space: 12 x 14 x 4.5 m (see plan on page 1)
- Flat, smooth, compact, and uniform surface capable of withstanding water splashes (no grass, gravel, irregular terrain...). Always send a photo to the company.
- Surface with a load capacity of 6000 kg per 2.25m² (approx. 0.26 kg/cm²)
- In case of outdoor setup, no external lighting (street lamps).
- Reinforced platform of 10 x 5 m in case of irregular terrain (outdoors).

PROVIDED BY THE COMPANY:

Black linoleum of 8x3m

Acrylic aquarium, scenography

ACCESS AND LOAD

- Possibility of scenography access (essential): 1.8m width x 2.3m height, in case of straight access.
- In case of curved access, plans to identify if the maneuver is possible.
- Parking for two vans and a trailer.

LOAD/UNLOAD

Mechanical bull to move the aquarium. (possibility of pallet truck)

AUDIENCE

Bifrontal arrangement. On both sides, located in **gradien** or similar for better visibility.

BACKSTAGE

- During the show, the performer uses the apnea technique, which requires meditative preparation during the 30 minutes before the start of the performance. Therefore, we request a preparation space as quiet and secluded as possible and close to the performance area.
- Clothing rack with hangers to dry the clothes used during the show
- Mirror
- Sink
- Water and fruit for the entire team from arrival until the company leaves
- Broom and bucket
- Large mop or broom and dustpan

SCHEDULES

Day 1

- Company arrival
- Space visit
- Pre-assembly

Day 2 - Performance day

- **Morning (4h) Organization staff: 1 stage manager, 1 lighting, 1 sound**
 - Unload
 - Assembly of the scenography
 - Assembly of lights
 - Assembly of sound
 - Filling of the aquarium
- **Afternoon (3h) Organization staff: 1 stage manager**
 - Technical tests
 - Warm-up

Performance

Dismantling (4h) Organization staff: 1 stage manager, 1 loader.

SCENOGRAPHY

- **Capacity: 4,950 liters.**
- **Filling time:**
 - Tanker truck: 5 minutes
 - Garden hose, urban pressure: 6 hours
- Heating: using 3 resistors of 3000W single-phase. Important independent differentials for technical tests.

Other details:

- 4 cm thick acrylic walls glued with stainless steel screw reinforcements, inner profile, and outer corners at the base
- Metal base with reinforcements at the bottom
- Measurements: 1.50 m² x 2.40 m in height
- Empty weight: 890 kg
- Full water weight: 5,840 kg