

# HERE WE GO!

## TECHNICAL REQUEST

**Duration of the show:** 30minuts

**Set up time:** 2 hours 30minuts

**Disassembly time:** 1 hour

### Scenic space:

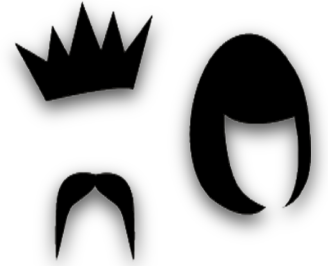
The show can be performing on the street or indoors  
The company takes care of the assembly and disassembly  
The scenic space: 8m by 8m and 5m50 minimum height  
Flat ground, without unevenness or holes and not inclined; Soil and soft soil are not suitable

### Sound and lights:

The company has its own sound system  
A 1,500W / 220V power outlet is required in the stage space  
Lighting equipment in charge of the organization (if necessary)

### Others:

Dressing rooms for 2 people as close as possible to the performance space  
It is recommended to have chairs for the audience  
Fences to enclose the back side of the space (street)  
A parking lot, near the performance's site.



Guga & Silvia

