

CONTACT

technician@inokollektiv.com

Info: ino.kollektiv@gmail.com

Show **INO** - Technical rider

Hand to hand, handstands, dance and acrobatics

General informations :

7 performing artists, 1 technician, 1 communications assistant.

Places of performance : street, circus tent, and theater.

Duration : 55 min

Placement of audience : Proscenium or semi-circle, max. 180 degrees. It is preferably frontal.

The provision of **tiers for the public is essential** for the correct visibility of the show. More than 30% of the show requires visibility of the floor.

We don't play at more than 30°. During the sunniest hours it is necessary to perform in the shade otherwise we will perform from 6pm.

A white lino is necessary if the sun touches it directly.

Stage :

Performance Space : 8 X 8 M surface and 6 M overhead space minimum.

Floor: Completely **flat, level** (0 % incline) and **stable**, with a **black dance floor** covering over the whole stage (a white dance floor will be preferable when the stage is outside in full sunlight, with risk of burns due to the warmth of the dance floor).

Outside, on concrete floor, it's important to put, under the vinyl floor, **a carpet** (moquette or similar) .

If in doubt, for the safety of the artists, please contact the company.

Sound :

- PA system adapted for the space and the audience seating with sub
- 2 monitor speakers on stage.
- 1 HF headset micro like DPA 4060

- A mixer with minimum 2 output channels stereo, 1 separate channel for the sub and 1 input channel for the mic).

Our sound card have only RCA outputs, make sure you have adaptators Jack or XLR according to your mixer.

Lighting (if performing indoors or at night) :

- **Refer to the lighting layout plan in the appendix:** Please contact the technician of the company to carry out the light adaptation.
- **A pre hang will be preferable**

Material request:

- 2 x profiles 1kW, like RJ 614SX
- 16 x PC 1kW
- 7 x PAR 64 CP62
- 8 x floor plates
- 4 x stands (2 of 2m50 and 2 of 1m30)

Filters :

L203 (6 for PC 1kW)

L202 (4 for PC 1kW)

L201 (4 for PC 1kW + 2 for profile 1kW)

L115 (1 for PC 1kW)

L124 (1 for PC 1kW)

#119 (5 for PC 1kW + 2 for profiles 1kW + 8 for PAR 64)

#114 (1 for PAR 64)

Technical control:

We come with a computer for the sound and a lighting control on a second computer (DMX 5pt.) The control room will be located in front of the playing area, as centered as possible. We will need a table large enough for **your mixer and our computers.**

Not forget to take a barnum for protect the boards to the sunlight, if the show is outdoor.

Schedule (date in light) show at 7pm :

D-1

Light pre hang

D-day

9am -1pm : Focus

3pm - 4pm : sound check

4pm - 5pm : check the cue light + artists' warmup
5pm - 6pm30 : Rehearsal (1h30, onstage if it's protected of the sunlight, **otherwise in a rehearsal space with free height of 6m minimum**)
7pm - 8pm : Show

Schedule (date without light) show at 7pm :

D-Day

4pm - 4pm30 : sound check
4pm30 - 5pm : artists' warmup
5pm - 6pm30 : Rehearsal (1h30, onstage if it's protected of the sunlight, **otherwise in a rehearsal space with free height of 6m minimum**)
7pm - 8pm : Show

Lodges and catering:

- Boxes close to the place of performance (no more than 5 minutes walk) and closed with toilets, drinking water points and mirrors.
- **If possible, thanks to provide 7 gymnastic mats for warmup**
- Please provide fruits and dried fruits, chocolate for the artists in the dressing room. We don't want plastic water bottles (we have our bottles to refill).

Meals :

8, including 7 vegetarians (included 1 gluten free)

We thank you for allowing the possibility of keeping our meals for after the show.

All requests will be studied and adaptations are possible. Nevertheless, in the event of non-compliance with the technical sheet without the approval of the artist, the latter may decide to cancel the performance if the conditions prove to be dangerous.

Signed at/ in _____, date _____

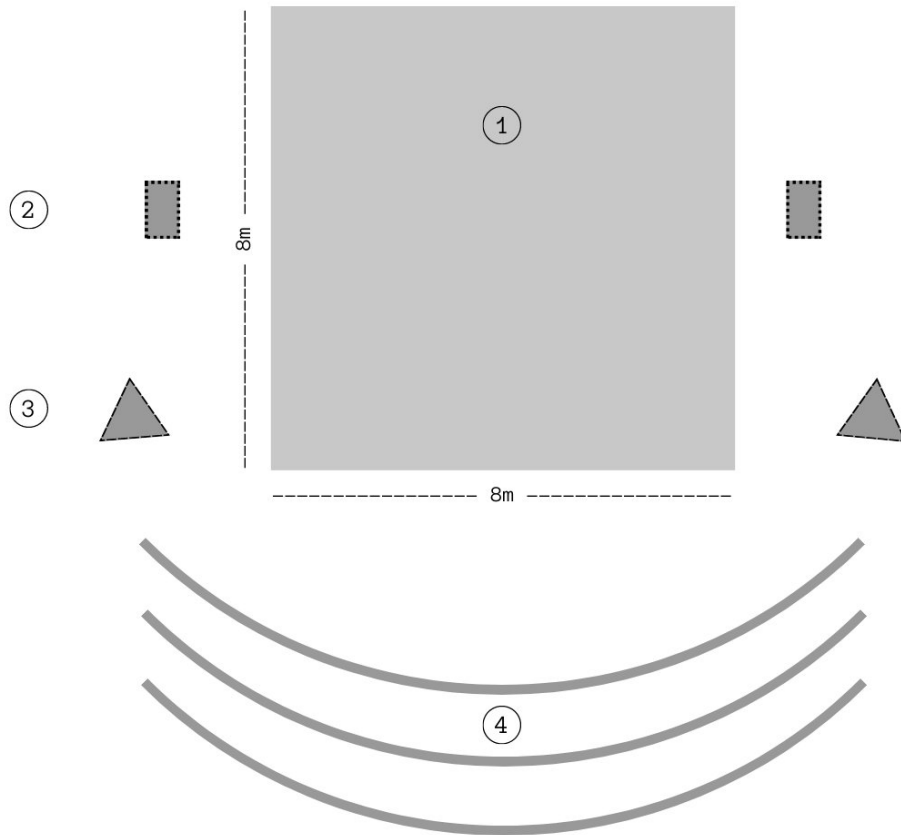
THE PRODUCER

THE PROMOTER

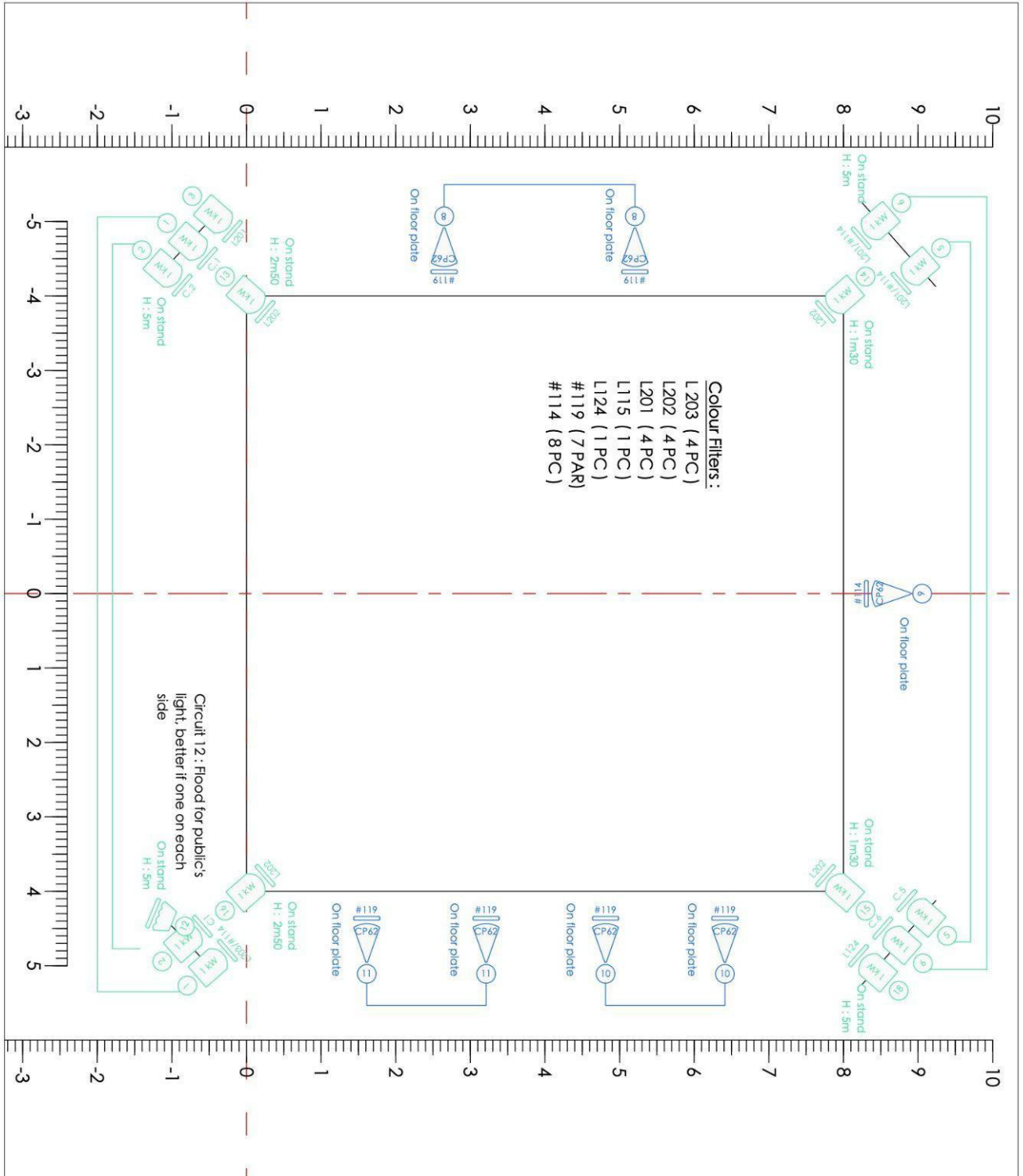
.....

.....

/// Rider INO ///



1. Lino
2. Monitors
3. Speakers
4. Public



"INO" INO Kollektiv		LEGEND : <div style="display: flex; justify-content: space-between;"> <div style="text-align: center;"> 1kW </div> <div style="text-align: center;"> PC 1kW </div> <div style="text-align: center;"> 7 Floor plate </div> </div> <div style="display: flex; justify-content: space-between; margin-top: 10px;"> <div style="text-align: center;"> PAR 64 CP 62 </div> <div style="text-align: center;"> 4 Stand 5m </div> </div> <p style="font-size: small; margin-top: 10px;"> BLUE : spotlights on floor plates GREEN : spotlights on stands : the lowest 4 PC are hung on the stands at defined heights or are on independent stand. </p>	
Lighting plot VERSION STREET			
Lighting designer : Lydie del Rabal	Scale 1:50	 Formato A3	
Update : 04/08/2023			
Contact : Laurine Chalou - Technician 06 20 22 00 74 - technician@inokollektiv.com			