



Company Manolo Alcántara Technical Specifications

Type of Show: Circus

Discipline: "Balance and Object manipulation"

Duration: 60 min.

Technical Responsible: Manolo Alcántara

T.: +34 629 384 996

@: rudo@ciamanoloalcantara.com

Production: Clàudia Saez

T.: +34 633 357 778

@: rudo@ciamanoloalcantara.com

1. THE COMPANY:

- RUDO is a "precarious" balance show with live music that takes place in a 11 meters circular area. There is scenery where about 120 persons can sit down.

RUDO has 3 people on stage (1 tightrope walker and 2 musicians) and 1 technician.

Company requirements:

-**Phone and contact** of a person to receive the company at arrival and to clarify any questions that may arise.

- **A safe place to park** the vehicles of the company. (**Truck + trailer =13mts**)

Details: Van and trailer

Number plate: 1470 GGB

Van:

Model: Volkswagen Crafter 35 Furgon

Color: Blanc

Measurement: High 2,73 m
Wide 1,95 m
Long 7,00 m

Trailer:

Model: Multi-800

Color Lona: Gris

Measurement: High 1,80 m
Wide 1,80 m
Long 6,00 m

Total Long: Van + Trailer = 13 m



*In outdoor spaces:

-**Space and material** surveillance when needed

- **A person** to receive the company at the performing place

-**Perimeter security fence** during set up to safeguard the scenery, the show and to provide safety of the public.

-**Stage manager** one hour before the performance, during the show and until pack up.

2.DRESSING ROOMS:

- One for 3 people equipped with:
- Chairs.
- Mirror.
- Clothes hanger
- Full bathroom with shower (hot water)
- Mineral water throughout the activity.**

*In outdoor spaces:

- Close distance from changing rooms to the performing space

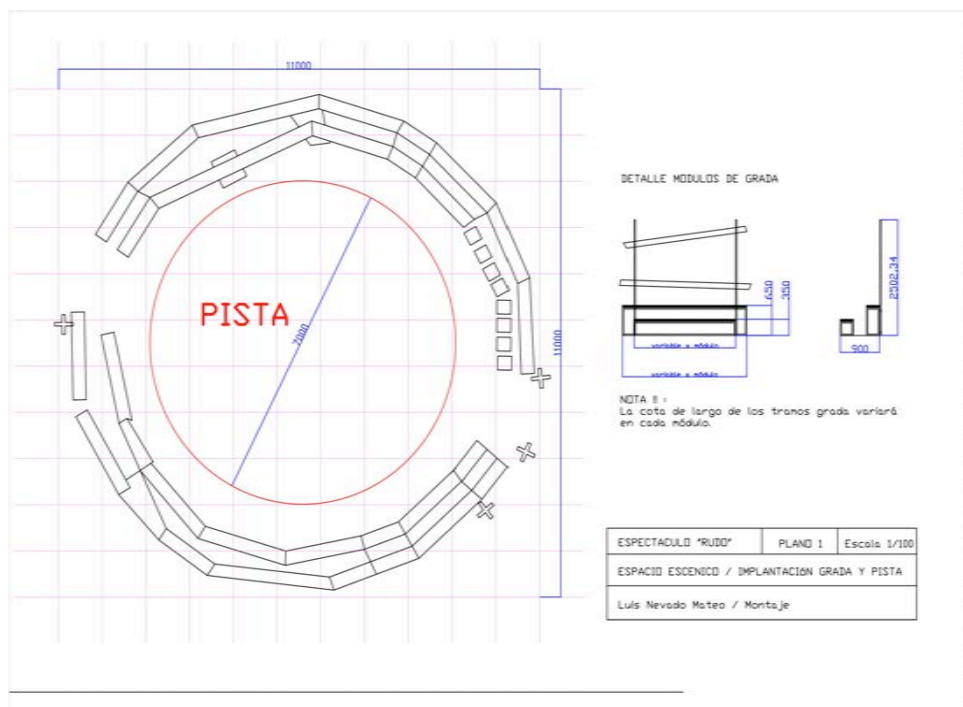
3.SCENERY SPACE:

- **Flat, leveled and smooth floor.** Minimum space 11x11meters with a height of 5 meters, excluding the perimeter space * (1)
- **As near as possible** to the company vehicle. (Truck + trailer =13mts)

*In outdoor spaces:

An Intimate space, quiet and sheltered from the wind.
If the ground does not meet the necessary conditions (uneven ground, gravel, sand, grass ...) the organization is asked to put a wooden platform (in good condition) of the measures required and at the minimum height from ground

4.IMPLEMETATION:



5.NECESSARY PERSONNEL (for setting up and packing up):

Setting up :

***In case of making two performances on the same day, setting up will be done the day before..**

- Total Setting up time: 4 hours. (+2h. Of lighting if needed)
- 2 Persons for the downloading and setting up for the first 2 hours.

Packing up:

- Total packing up time: 2 hours and a half
- 2 persons to pack up and load

6.THE PERFORMANCE (needs and personnel):

-Minimum 1 stage manager that will help control the entry of public and will be outside to ensure the good development of the show.

* (if case of wheelchairs or people with mobility problems, please notify the company)

PUBLIC ENTRY :

Public will enter 5 minutes before the show begins due to performing requirements

7.TECHNICAL NEEDS:

Sound :

-P.A:

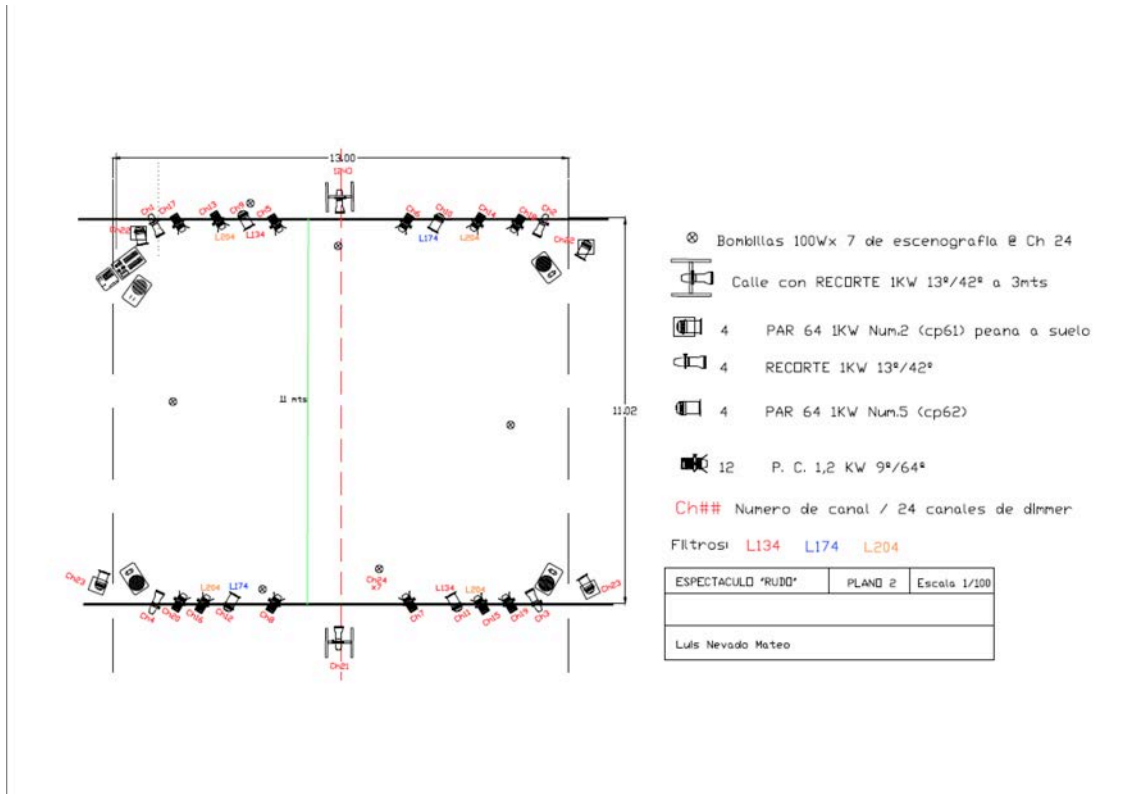
- 4 auto-amplified monitors of 300W on 2 meters high tripods.
- 6 channels Analogical sound table in one side of the stands.
- Audio cable to cover the entire circle perimeter

Lighting :

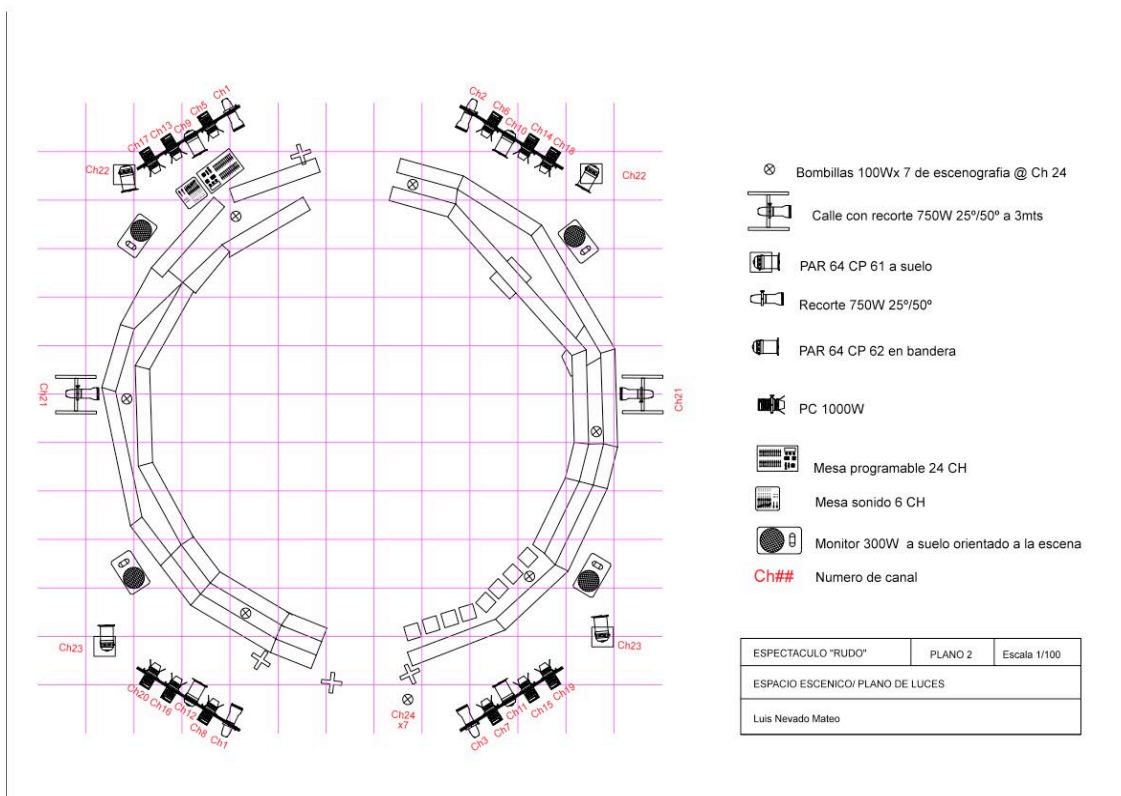
- 4 Tripods for lights of 5 meters high or a 5 meters high structure to hang lights according to lighting plan
- 6- Profile spotlights 750W 25°/50° with filter holder
- 2- Side lighting minimum height . 2m.
- 4 PAR 64 with CP.62 Lamp and filter holder
- 4 PAR 64 with CP.61 Lamp and filter holder
- 12 PC 1000W with barn doors and filter holder
- 24 CH dimmer
- Programmable light board (minimum 24 channels) one side of the stands
- Wire for the whole installation, and for the lamps of the scenery.
- A high ladder to focus.

8. LIGTHING PLAN

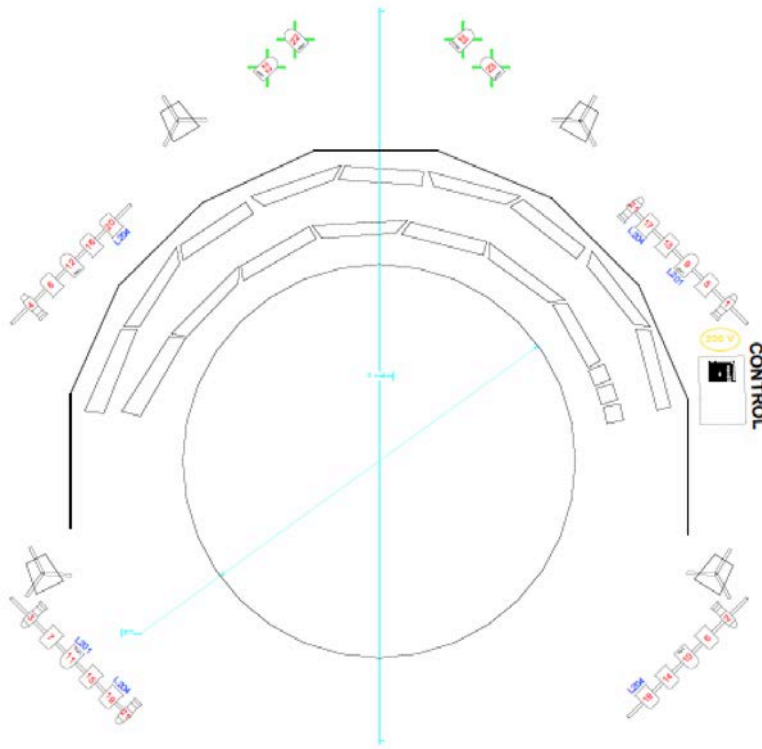
8.1. Theatre



8.2. Exterior or No Theatre



8.3. Show with Open Structure



RUDO
COMPAÑIA MANOLO ALCANTARA

LEYENDA	
LUMINACIÓN:	
	ETC 750w 2550° X 6
	PAR 64 (11°5) X 8
	PC 11w X 12
Dimmer 24 canales 210w por canal	
	L777 CH
	120V
<small>*Toda la proyección (Focus, levante, safety, posición de apertura) y punto fijo. En el caso de PC's deberán estar equipadas con mismas.</small>	
SONIDO:	
	AUTO-AMPLIFICADA 400W CON TRIPODE 1,70 m. ALTURA
	YAMAHA 01V96
EXTRUCTURA:	
	TORRE TELESCÓPICA DE 6m. ALTURA X 4
	PEANA SUELO X 4
	120V TOMA DIRECTA

Francis Baena
00 34 607 232 751
strm@alcan@gmail.com